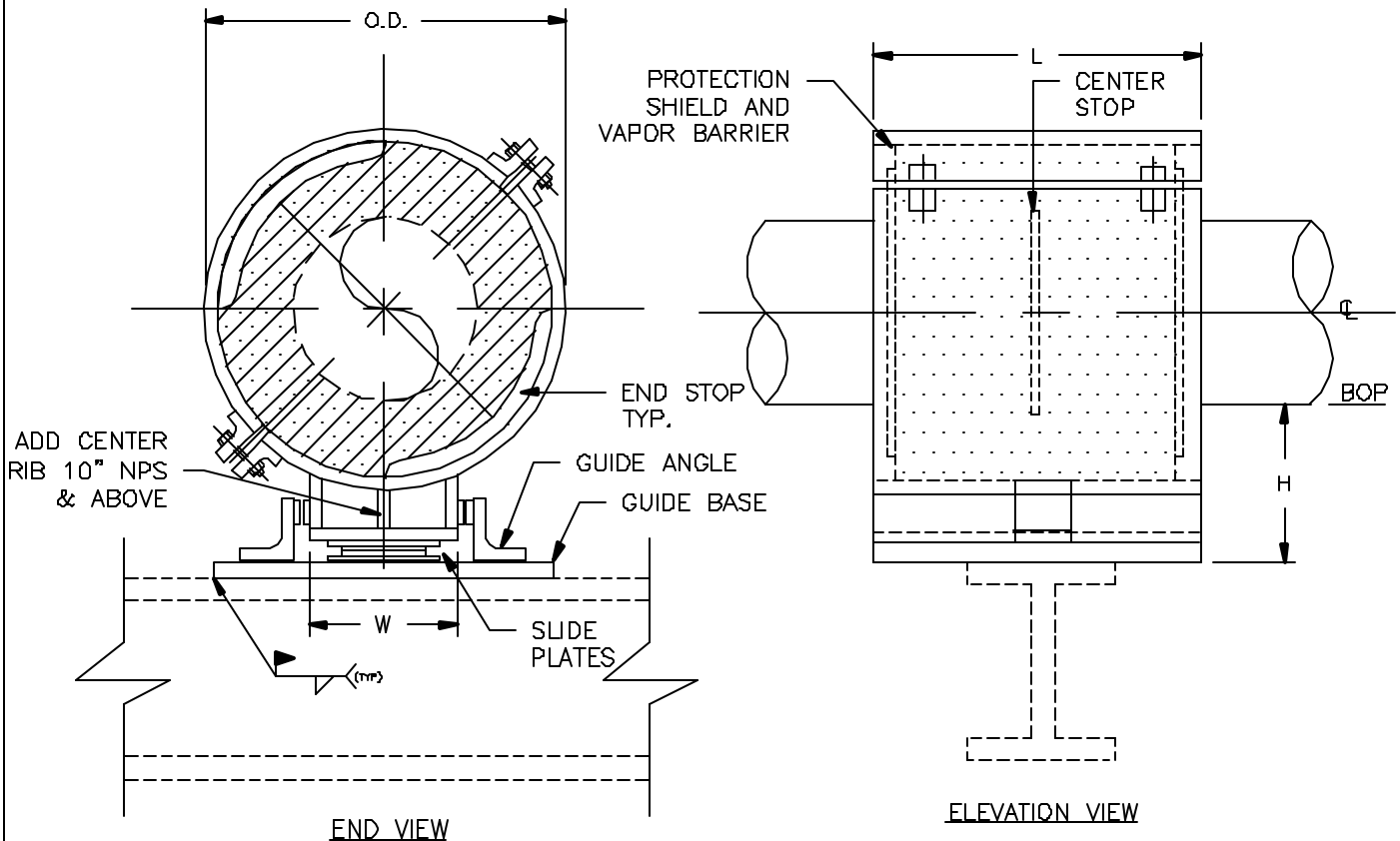


SPECIFICATIONS

INSULATION THK: _____
 SHOE LENGTH: _____
 LOADS: VERTICAL _____
 LATERAL _____
 AXIAL _____
 MOVEMENT: LATER. _____
 AXIAL _____
 TEMPERATURE: _____



Design: PT&P 6/1/1999 2:04 PM CS-3030

NOTES

FIGURE#: CS-3030 (CRYOSHOE™)
 DESCRIPTION: SLIDING SHOES, DOUBLE-T-BASE, GUIDED, WITH THRUST PLATES

FUNCTION: USE TO SUPPORT VERTICAL LOADS. LATERAL MOVEMENT LIMITED BY GUIDES. MOVEMENT OF PIPE INSIDE THE COLDSHOE LIMITED BY CENTER STOP AND END STOPS. SHOE ALLOWED TO SLIDE IN AXIAL DIRECTION.

CLIENT NAME: _____
 PROJECT NAME: _____
 REQUISITION#: _____
 P.O.#: _____
 DWG#: _____
 MARK#: _____
 PT&P JOB#: _____ ITEM#: _____
 DATE: _____

PIPE SIZE: 24" TO 42" NPS
 MATERIAL: GALVANIZED OR HDG CARBON STEEL
 INSULATION: HIGH DENSITY POLYURETHANE WITH VAPOR BARRIER

PIPING TECHNOLOGY & PRODUCTS, INC.

P.O. BOX 34506 HOUSTON TEXAS 77234
 3701 HOLMES RD. HOUSTON TEXAS 77051
 TELE#:(713)731-0030 FAX#:(713)731-8640
<http://www.pipingtech.com/> E-MAIL: info@pipingtech.com



TEMP. RANGE: AMBIENT TO -300°F
 LAYERING SY.: SEE LAYERING CHARTS
 SHOE LTH.(L): STANDARD SHOE AVAILABLE IN 12" & 18" LENGTHS
 TO ORDER: SPECIFY PIPE SIZE, INSULATION THK., LENGTH HENCE. (CS-3030)-NPS-THK.-L
 LOADS: ALL LOADS ON ADJACENT CHART HAVE A SAFETY FACTOR OF 5



Large Diameter Coldshoe ready for shipment

Pipe size	Vertical Load(lbs)	Vertical Load(lbs)	Insulation Thickness											
			1"			1-1/2"			2"			2-1/2"		
			W	O.D.	H	W	O.D.	H	W	O.D.	H	W	O.D.	H
24"	11605	16579	14-1/2"	27"	4"	15"	28"	4"	15-1/2"	29"	6"	16"	30"	6"
26"	12573	17961	16-1/4"	29-1/2"	4"	16-3/4"	30-1/2"	6"	17-1/4"	31-1/2"	6"	17-3/4"	32-1/2"	6"
28"	13540	19342	17-1/4"	31-1/2"	4"	17-3/4"	32-1/2"	6"	18-1/4"	33-1/2"	6"	18-3/4"	34-1/2"	6"
30"	14507	20724	18-1/4"	33-1/2"	4"	18-3/4"	34-1/2"	6"	19-1/4"	35-1/2"	6"	19-3/4"	36-1/2"	6"
32"	15474	22106	19-1/4"	35-1/2"	4"	19-3/4"	36-1/2"	6"	20-1/4"	37-1/2"	6"	20-3/4"	38-1/2"	6"
34"	16441	23487	20-1/4"	37-1/2"	4"	20-3/4"	38-1/2"	6"	21-1/4"	39-1/2"	6"	21-3/4"	40-1/2"	6"
36"	17408	24869	21-1/4"	39-1/2"	4"	21-3/4"	40-1/2"	6"	22-1/4"	41-1/2"	6"	22-3/4"	42-1/2"	6"
40"	19342	27632	23-1/4"	43-1/2"	4"	23-3/4"	44-1/2"	6"	24-1/4"	45-1/2"	6"	24-3/4"	46-1/2"	6"
42"	20310	29014	24-1/4"	45-1/2"	4"	24-3/4"	46-1/2"	6"	25-1/4"	47-1/2"	6"	25-3/4"	48-1/2"	6"

Pipe size	Vertical Load(lbs)	Vertical Load(lbs)	Insulation Thickness								
			3"			3-1/2"			4"		
			W	O.D.	H	W	O.D.	H	W	O.D.	H
24"	11605	16579	16-1/2"	31"	6"	17"	32"	6"	17-1/2"	33"	8"
26"	12573	17961	18-1/4"	33-1/2"	6"	18-3/4"	34-1/2"	6"	19-1/4"	35-1/2"	8"
28"	13540	19342	19-1/4"	35-1/2"	6"	19-3/4"	36-1/2"	6"	20-1/4"	37-1/2"	8"
30"	14507	20724	20-1/4"	37-1/2"	6"	20-3/4"	38-1/2"	6"	21-1/4"	39-1/2"	8"
32"	15474	22106	21-1/4"	39-1/2"	6"	21-3/4"	40-1/2"	6"	22-1/4"	41-1/2"	8"
34"	16441	23487	22-1/4"	41-1/2"	6"	22-3/4"	42-1/2"	6"	23-1/4"	43-1/2"	8"
36"	17408	24869	23-1/4"	43-1/2"	6"	23-3/4"	44-1/2"	6"	24-1/4"	45-1/2"	8"
40"	19342	27632	25-1/4"	47-1/2"	6"	25-3/4"	48-1/2"	6"	26-1/4"	49-1/2"	8"
42"	20310	29014	26-1/4"	49-1/2"	6"	26-3/4"	50-1/2"	6"	27-1/4"	51-1/2"	8"