



FIG. 210

ROLLER CHAIR

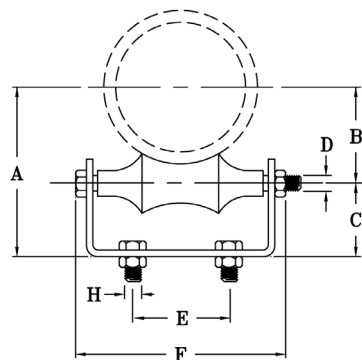
www.pipingtech.com/fig210

MATERIAL: Cast iron roll, steel roll rod, steel continuous thread rods and hex nuts.

SERVICE: For support of pipe where horizontal movement due to expansion and contraction will occur and where vertical adjustment up to 6" may be necessary.

- HOW TO SIZE:**
1. If roll is to support bare pipe, select the size directly from nominal pipe size.
 2. If used with pipe covering protection saddle, see pipe insulation chart for size of pipe roll.
 3. If roll is to support covered pipe, the O.D. of the covering should not be greater than the O.D. of the pipe for which the roll was designed.

ORDERING: Specify figure number, pipe size, description and finish.



PIPE SIZE	MAX. RECOM. LOAD (lb.)	WEIGHT (lb. per 100)	A	B	C	D	E	F	STEEL SIZE G	BOLT SIZE H
2	600	110	3 1/16	1 9/16	1 1/2	3/8	1 1/4	3 7/8	1/4 x 1 1/4	3/8 x 1 1/4
2 1/2	660	136	3 1/2	1 7/16	1 5/8	1/2	1 1/4	4 3/4	1/4 x 1 1/4	3/8 x 1 1/4
3	700	164	3 15/16	2 3/16	1 3/4	1/2	2	5 1/2	1/4 x 1 1/4	3/8 x 1 1/4
3 1/2	750	250	4 1/2	2 1/2	2	1/2	2	6	3/8 x 1 1/2	1/2 x 1 1/2
4	750	305	5 1/16	2 3/4	2 5/16	1/2	2	6 1/2	3/8 x 1 1/2	1/2 x 1 1/2
5	750	428	5 15/16	3 7/16	2 1/2	5/8	2 1/2	7 7/8	3/8 x 1 1/2	1/2 x 1 1/2
6	1,070	535	6 3/4	4	2 3/4	3/4	3 1/4	9 1/2	3/8 x 1 3/4	1/2 x 1 1/2
8	1,350	690	8 1/4	5 1/4	3	7/8	4	11 3/4	3/8 x 2	1/2 x 1 1/2
10	1,730	1,263	9 7/8	6 1/4	3 5/8	7/8	5	14 1/4	1/2 x 2	1/2 x 1 1/2
12	2,400	2,060	11 9/16	7 7/16	4 1/8	1	6	16 1/2	1/2 x 2	1/2 x 1 1/2
14	3,130	2,680	13 1/16	8 5/16	4 3/4	1 1/8	7	18 5/8	1/2 x 2 1/2	5/8 x 2
16	3,970	4,575	14 3/8	9 3/8	5	1 1/4	8	21	5/8 x 2 1/2	5/8 x 2 1/2
18	4,200	4,700	15 5/8	10 3/8	5 1/4	1 1/4	9	22 7/8	5/8 x 2 1/2	5/8 x 2 1/2
20	4,550	6,200	17 1/4	11 1/2	5 3/4	1 3/8	10	25 1/2	5/8 x 3	3/4 x 3
24	6,160	9,990	20 13/16	13 13/16	7	1 1/2	12	30	3/4 x 3	3/4 x 3

SCOMPONENTS06.XLS-07/01/09

FIG. 215

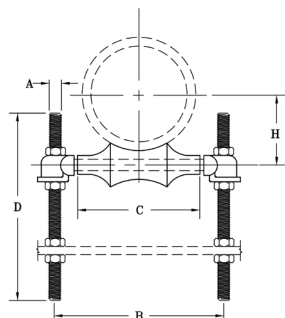
ADJUSTABLE PIPE ROLL SUPPORT

MATERIAL: Cast iron roll and sockets, steel roll rod, steel continuous thread rods and hex nuts.

SERVICE: For support of pipe where horizontal movement due to expansion and contraction will occur and where vertical adjustment up to 6" may be necessary.

SIZE: If roll is to support bare pipe, select the size directly from nominal pipe size.

ORDERING: Specify figure number, pipe size, description and finish.



PIPE SIZE	APPROX. WEIGHT (lb. per 100)	A	B	C	D	H
1	113	3/8	3	1 1/2	9 1/2	1 1/16
1 1/4	117	3/8	3 3/8	1 7/8	9 1/2	1 1/4
1 1/2	120	3/8	3 5/8	2 1/8	9 1/2	1 3/8
2	125	3/8	4 1/8	2 5/8	9 1/2	1 5/8
2 1/2	229	1/2	4 7/8	3 1/8	9 1/2	1 15/16
3	242	1/2	5 1/2	3 3/4	9 1/2	2 1/4
3 1/2	269	1/2	6 1/8	4 1/2	10	2 9/16
4	375	5/8	6 3/4	4 3/4	10	2 13/16
5	469	5/8	8 1/16	5 13/16	10	3 7/16
6	757	3/4	9 9/16	6 7/8	11	4
8	1,101	7/8	11 15/16	8 7/8	11 3/4	5 1/8
10	1,374	7/8	14 1/16	11	11 3/4	6 3/8
12	1,936	7/8	15 13/16	12 1/2	11 3/4	7 7/16
14	3,116	1	17 3/4	14 1/4	11 3/4	8 3/8
16	4,245	1 1/8	19 3/4	16 1/4	18	9 7/16
18	4,655	1 1/8	21 7/8	18 1/4	18	10 1/2
20	6,623	1 1/4	24 1/4	20 1/4	18	11 5/8
24	10,252	1 1/2	28 5/8	24 1/4	24	14
30	18,681	1 7/8	35 1/2	30 1/4	24	17 7/16

www.pipingtech.com/fig215

SCOMPONENTS06.XLS-07/01/09