

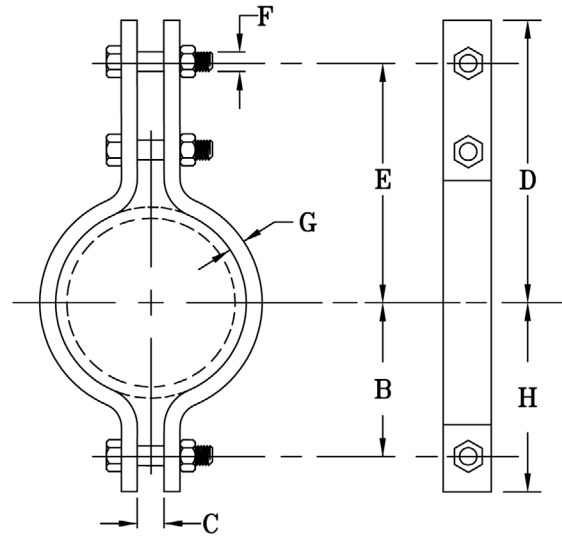


FIG. 70A

ALLOY LIGHT THREE-BOLT PIPE CLAMP

www.pipingtech.com/fig70a

- SIZE RANGE:** ½" thru 36"
- MATERIAL:** Chrome molybdenum steel
- FINISH:** Black
- SERVICE:** Recommended for suspension of hot pipe lines requiring up to 4" of insulation.
- MAX. TEMP.:** 1050 °F
- ORDERING:** Specify figure number, pipe size, description and finish.



SUPPORT ASSEMBLY COMPONENTS

PIPE SIZE	MAX. RECOM. LOAD (lb.)			B	C	D	E	F	G	H	APPROX. WEIGHT (lb. per each)
	@ 750 °F	@ 1000 °F	@ 1050 °F								
1/2	860	610	455	15/16	5/16	2 7/8	2 7/16	3/8	3/16 x 1	1 3/8	0.66
3/4	860	610	455	15/16	5/8	2 7/8	2 7/16	3/8	3/16 x 1	1 3/8	0.70
1	860	610	455	1 1/16	5/8	3	2 9/16	3/8	3/16 x 1	1 1/2	0.76
1 1/4	860	610	455	1 1/4	5/8	3 1/8	2 11/16	3/8	3/16 x 1	1 11/16	0.81
1 1/2	1,410	1,000	745	1 13/16	1 1/16	4 7/8	4 1/8	5/8	1/4 x 1 1/4	2 3/8	2.30
2	1,410	1,000	745	2 1/8	1 1/16	5 7/8	5 1/8	5/8	1/4 x 1 1/4	2 11/16	2.60
2 1/2	1,410	1,000	745	2 5/16	1 1/16	6 1/8	5 3/8	5/8	1/4 x 1 1/4	2 15/16	2.70
3	1,410	1,000	745	2 3/4	1 1/16	6 11/16	5 15/16	5/8	1/4 x 1 1/4	3 1/2	3.00
4	2,290	1,625	1,200	3 3/8	1 1/16	7 5/8	6 1/2	3/4	5/16 x 2	4 1/2	6.70
5	2,290	1,625	1,200	3 15/16	1 1/16	8 1/8	7	3/4	5/16 x 2	5	7.00
6	2,620	1,860	1,380	4 3/4	1 7/16	9 11/16	8 9/16	7/8	3/8 x 2 1/2	6 1/8	11.50
8	2,620	1,860	1,380	5 3/4	1 7/16	10 11/16	9 9/16	7/8	3/8 x 2 1/2	7 1/8	13.20
10	2,970	2,100	1,565	6 7/8	1 7/16	12	10 7/16	1	1/2 x 2 1/2	8 1/4	19.80
12	2,970	2,095	1,555	7 7/8	1 7/16	13	11 7/16	1	1/2 x 2 1/2	9 1/4	22.30
14	3,915	2,795	2,060	9 1/16	2	14 5/16	12 11/16	1 1/4	5/8 x 3	10 11/16	37.70
16	3,915	2,795	2,060	10 1/16	2	15 5/16	13 11/16	1 1/4	5/8 x 3	11 11/16	41.40
18	3,915	2,795	2,060	11 1/16	2	16 5/16	14 11/16	1 1/4	5/8 x 3	12 11/16	44.90
20	4,995	3,550	2,635	12 3/8	2	17 5/8	15 7/8	1 1/2	3/4 x 3	14	57.30
24	4,995	3,550	2,635	14 3/8	2	19 5/8	17 7/8	1 1/2	3/4 x 3	16	65.90
28	5,475	3,890	2,900	17 1/2	2 1/4	24 1/4	21 3/4	1 1/2	3/4 x 4	20	112.30
30	6,850	4,860	3,630	18 1/2	2 1/2	26 1/8	23 3/8	1 1/2	3/4 x 5	21 1/4	150.00
36	9,580	6,800	5,070	22 1/2	3	32 1/4	28 3/4	1 3/4	1 x 5	26	257.50