



FIG. 95

STEEL CLEVIS

www.pipingtech.com/fig95

MATERIAL: Carbon steel

SERVICE: For use on high temperature piping installations.

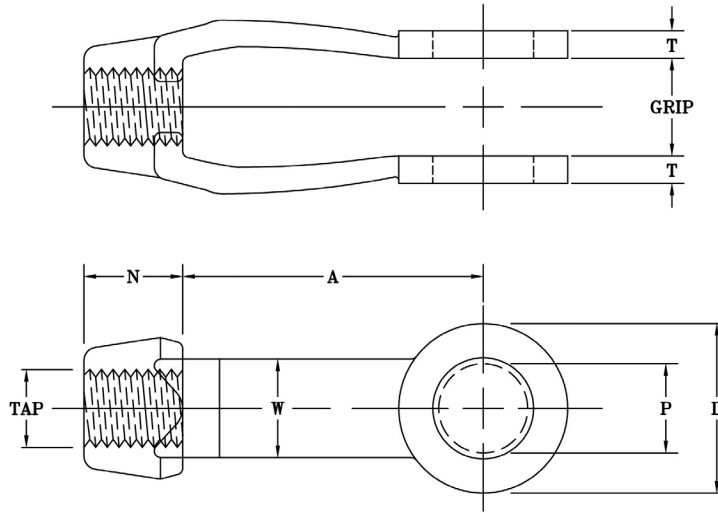
- FEATURES:**
- Complies fully with the code for pressure piping.
 - Supports loads equal to the full limitation of the hanger rod.

ORDERING: Specify figure number, body size, description, rod tapping, size of pin hole, size of pin, size of grip and finish. We may supply fabricated or forged.

SUPPORT ASSEMBLY COMPONENTS



FABRICATED



FORGED

ROD SIZE	MAX. RECOM. LOAD (lb.)		APPROX. WEIGHT (lb. per each)	BODY SIZE NO.	PIN SIZE			N	T	W	MAX. GRIP
	@ 650 °F	@ 750 °F			P	A	D				
3/8	730	572	1.0	2	1/2	3 7/8	1 7/16	5/8	5/16	1 1/16	5/8
1/2	1,350	1,057	0.9		5/8	3 7/8	1 7/16	5/8	5/16	1 1/16	5/8
5/8	2,160	1,692	0.9		3/4	3 7/8	1 7/16	5/8	5/16	1 1/16	5/8
3/4	3,230	2,530	2.5	2 1/2	7/8	4	2 1/2	1 1/8	5/16	1 1/4	7/8
7/8	4,480	3,508	2.5		1	4	2 1/2	1 1/8	5/16	1 1/4	7/8
1	5,900	4,620	4.0	3	1 1/8	5	3	1 5/16	1/2	1 1/2	1 1/4
1 1/8	7,600	4,620	4.0		1 1/4	5	3	1 5/16	1/2	1 1/2	1 1/4
1 1/4	9,500	7,440	4.0		1 3/8	5	3	1 5/16	1/2	1 1/2	1 1/4
1 1/2	13,800	10,807	6.0	3 1/2	1 5/8	6	3 1/2	1 5/8	1/2	1 3/4	1 1/2
1 3/4	18,600	14,566	8.0	4	1 7/8	6	4	1 3/4	1/2	2	1 1/2
2	24,600	19,265	16.0	5	2 1/4	7	5	2 1/4	5/8	2 1/2	2 1/2
2 1/4	32,300	25,295	26.0	6	2 1/2	8	6	2 3/4	3/4	3	2 1/2
2 1/2	39,800	31,169	26.0		2 3/4	8	6	2 3/4	3/4	3	2 1/2

SCOMPONENTS04.XLS-09/02/11