

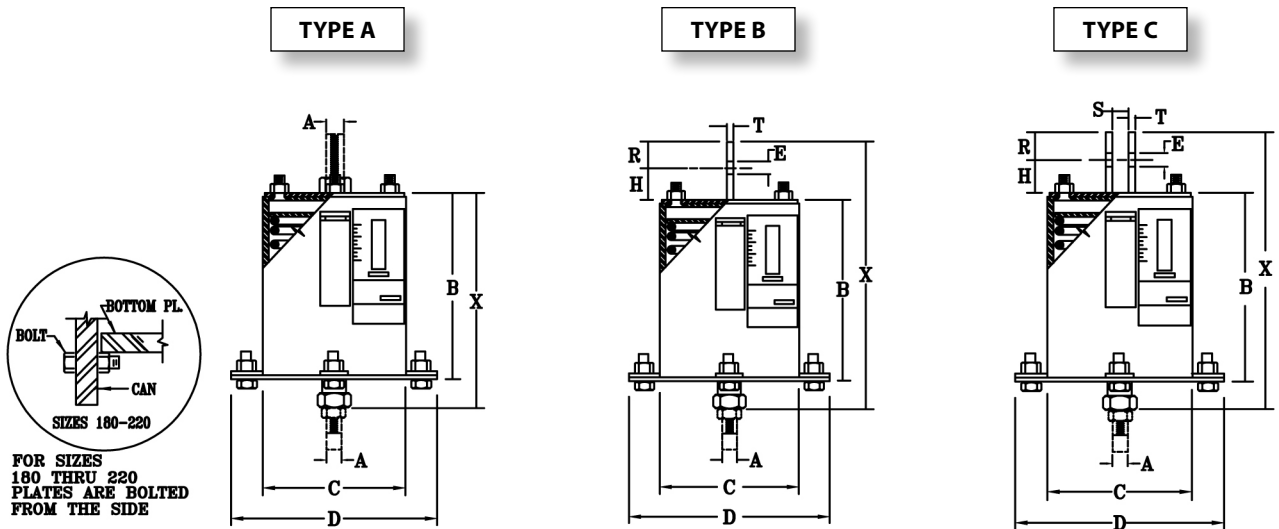


FIG. PTP-1

SHORT VARIABLE SPRING

www.pipingtech.com/ptp1-abc

ENGINEERED SPRING SUPPORTS



ORDERING: Figure number, size, type, description, type, operating load and calculate amount & direction of pipe movement from installed to operating position. Please specify any non-standard requirements, i.e. internally guided load column, jacking bolt, lifting lugs, etc.

GENERAL DIMENSIONS FOR FIG. PTP-1				TYPE A			TYPES B & C								TYPES A, B & C	
HANGER SIZE	ROD SIZE	CASING DIA.	BOTT. PLATE DIA.	CASING LENGTH	LOADED LENGTH X		CASING LENGTH	LUG HOLE SIZE	HEIGHT OF PIN	R	CLEVIS OPENING	THICKNESS	LOADED LENGTH X		APPROX. WEIGHT OF EACH	
	A	C	D		B	MIN.							MAX.	B		E
00	1/2	4	6 1/8	4 7/8	5 11/16	6 15/16	4 7/8	11/16	1 1/2	1 1/4	7/8	1/4	8 7/16	9 11/16	5	
10	1/2	4	6 1/8	5 1/8	5 7/8	7 1/8	5 1/8	11/16	1 1/2	1 1/4	7/8	1/4	8 5/8	9 7/8	6	
20	1/2	4	6 1/8	5 3/4	6 9/16	7 13/16	5 3/4	11/16	1 1/2	1 1/4	7/8	1/4	9 5/16	10 9/16	7	
30	1/2	5 9/16	7 5/8	5 1/4	6 1/8	7 3/8	5 1/4	11/16	1 1/2	1 1/4	7/8	1/4	8 7/8	10 1/8	9	
40	1/2	5 9/16	7 5/8	5 5/8	6 5/16	7 9/16	5 5/8	11/16	1 1/2	1 1/4	7/8	1/4	9 1/16	10 5/16	10	
50	1/2	5 9/16	7 5/8	6	6 7/8	8 1/8	6	11/16	1 1/2	1 1/4	7/8	1/4	9 5/8	10 7/8	11	
60	5/8	6 5/8	8 7/8	6	7 3/16	8 7/16	6	13/16	1 1/2	1 1/4	1 1/16	1/4	9 15/16	11 3/16	17	
70	5/8	6 5/8	8 7/8	6 5/8	7 7/8	9 1/8	6 5/8	13/16	1 1/2	1 1/4	1 1/16	1/4	10 5/8	11 7/8	20	
80	5/8	6 5/8	8 7/8	6 7/8	8 1/4	9 1/2	6 7/8	13/16	1 1/2	1 1/4	1 1/16	1/4	11	12 1/4	21	
90	3/4	8 5/8	11 5/8	7 1/4	8 1/8	9 3/8	7 1/4	15/16	1 1/2	1 1/4	1 1/4	3/8	10 7/8	12 1/8	46	
100	3/4	8 5/8	11 5/8	7 3/4	8 7/16	9 11/16	7 3/4	15/16	1 1/2	1 1/4	1 1/4	3/8	11 3/16	12 7/16	52	
110	3/4	8 5/8	11 5/8	6 7/16	8 1/8	9 3/8	6 7/16	15/16	1 1/2	1 1/4	1 1/4	3/8	10 7/8	12 1/8	45	
120	1	8 5/8	11 5/8	7 1/8	9 1/16	10 5/16	7 1/8	1 1/4	2	1 1/2	1 5/8	1/2	12 9/16	13 13/16	48	
130	1	8 5/8	11 5/8	8 1/2	9 3/4	11	8 1/2	1 1/4	3	1 1/2	1 5/8	1/2	13 1/4	14 1/2	59	
140	1 1/4	8 5/8	11 5/8	9	10 1/2	11 3/4	9	1 1/2	3	2	2	5/8	15 1/2	16 3/4	62	
150	1 1/4	8 5/8	11 5/8	8 7/8	11 5/16	12 9/16	8 7/8	1 1/2	3	2	2	5/8	16 5/16	17 9/16	74	
160	1 1/2	8 5/8	11 5/8	10 1/2	13 1/2	14 3/4	10 1/2	1 3/4	3	2 1/2	2 3/8	3/4	19	20 1/4	88	
170	1 3/4	8 5/8	11 5/8	11 3/4	15 9/16	16 13/16	11 3/4	2	3	2 1/2	2 3/8	3/4	21 1/16	22 5/16	106	
180	2	12 3/4	N/A	15	17 1/8	18 3/8	15	2 3/8	4	3	2 7/8	3/4	24 1/8	25 3/8	229	
190	2 1/4	12 3/4	N/A	16	18 3/8	19 5/8	16	2 5/8	4 1/2	3	3 1/8	3/4	25 7/8	27 1/8	256	
200	2 1/2	12 3/4	N/A	20	22 3/8	23 5/8	20	2 7/8	4 1/2	4	3 1/4	1	30 7/8	32 1/8	320	
210	2 3/4	12 3/4	N/A	20 5/8	23 1/4	24 1/2	20 5/8	3 1/8	4 1/2	4	3 5/8	1	31 3/4	33	371	
220	3	12 3/4	N/A	24 7/8	27 3/4	29	24 7/8	3 3/8	5	4	3 7/8	1	36 3/4	38	460	

SPRING.XLS-04/21/2017