

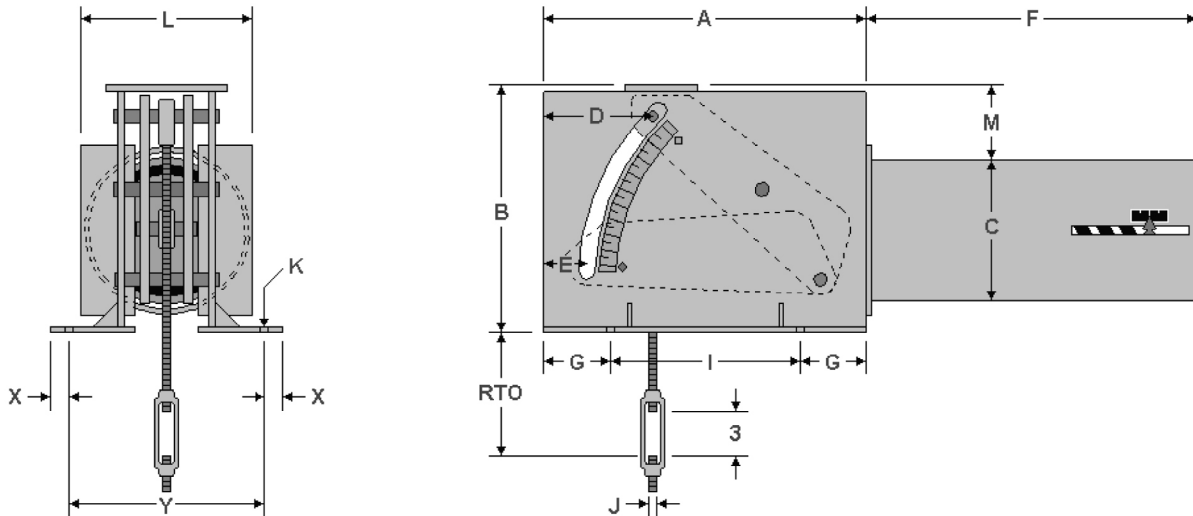


FIG. PTP 200-E

CONSTANT

www.pipingtech.com/ptp200-e

ENGINEERED PIPE SUPPORTS



* Drawing shown for down travel

Figure PTP 200-E is a horizontal constant with base plates which are bolted directly to the top of the steel as shown above. The rod take out (RTO) given in the tables below are minimum and may not exceed the depth of the supporting steel. If this is the case, to clear the depth of the supporting steel, the rod take out (RTO) can be specified to exceed the minimum.

ORDERING: Specify figure number, size, type, load, actual travel, total travel and direction of travel. For load and travel not in the tables, please call for dimensions.

IMPORTANT NOTES: All dimensions are in inches unless otherwise noted.

- RTO - Rod take out for down travel
- D - J-Rod position for down travel
- E - J-Rod position for up travel
- F - Maximum length for the load range
- M - Maximum height for the load range
- WT - Maximum weight for the load range

J-Rod and Base Attachment Selection

LOAD (lb.)	0	393	766	1492	2403	3869	5664	9122	13355	17776	23660	28628	38104	46105
	392	765	1491	2402	3868	5663	9121	13354	17775	23659	28627	38103	46104	60000
J-ROD	1/2	1/2	5/8	3/4	1	1 1/4	1 1/2	1 3/4	2	2 1/4	2 1/2	2 3/4	3	3 1/4
K-HOLE	9/16	9/16	3/4	3/4	3/4	3/4	7/8	7/8	1 3/8	1 3/8	1 5/8	1 5/8	1 5/8	1 5/8
X	5/8	5/8	5/8	5/8	5/8	5/8	13/16	13/16	1 5/16	1 5/16	1 9/16	1 9/16	1 9/16	1 9/16
Y	5 15/16	8 1/8	8 1/8	8 1/8	10 3/16	10 3/16	12 3/8	12 3/8	14 11/16	14 11/16	14 15/16	14 15/16	14 15/16	14 15/16

Total Travel 1 1/2 to 4 inches

LOAD RANGE (lb.)	J-ROD	RTO*	A	B	C	D	E	F	G	I	L	M	WT (lb.)
44 - 243	1/2	5 3/4	12 1/2	9	6 5/8	3 7/8	2 5/16	12	1 7/8	8 3/4	7 5/8	1 1/4	60
244 - 1018	1/2	4 1/2	13 1/2	11 1/4	8 5/8	4 3/8	2 13/16	15	2 3/8	8 3/4	11 5/8	1 1/4	105
	5/8	4 1/2											
1019 - 3516	5/8	4 3/8	14	11 1/2	8 5/8	4 3/8	2 13/16	22	2 3/8	9 1/4	11 5/8	1 3/8	215
	3/4	4 3/8											
	1	6 3/8											

*Rod Take Out (RTO) is for down travel [Add 4 inches for up travel]

CONSTANTS_200.XLS-04/22/17



FIG. PTP 200-E

CONSTANT

ENGINEERED PIPE SUPPORTS

www.pipingtech.com/ptp200-e

Total Travel 1 1/2 to 4 inches

LOAD RANGE (lb.)	J-ROD	RTO*	A	B	C	D	E	F	G	I	L	M	WT (lb.)
3517 - 7538	1	6 11/16	15 3/4	13 3/4	8 5/8	5 7/8	4 1/4	33	3 1/2	8 3/4	11 5/8	1 1/2	380
	1 1/4	7 11/16											
	1 1/2	7 15/16											
7539 - 16159	1 1/2	6 1/4	19 3/4	17 1/2	12 3/4	7 5/8	6 1/16	44	4 3/8	11	18 3/8	1 1/2	1,035
	1 3/4	7 3/4											
	2	11 3/4											
16160 - 31490	2	10 3/4	23 3/4	20 1/2	12 3/4	10 3/8	8 13/16	58	6 1/2	10 3/4	18 3/8	3 1/2	1,705
	2 1/4	12 3/4											
	2 1/2	12 3/4											
	2 3/4	14 3/4											

*Rod Take Out (RTO) is for down travel [Add 4 inches for up travel]

CONSTANTS_200.XLS-04/22/17

Total Travel 4 1/2 to 6 inches

LOAD RANGE (lb.)	J-ROD	RTO*	A	B	C	D	E	F	G	I	L	M	WT (lb.)
34 - 183	1/2	3 9/16	15 1/4	10 1/2	6 5/8	4 3/8	2	12	2	11 1/4	7 5/8	2 11/16	65
184 - 765	1/2	2 9/16	16 3/4	12	8 5/8	5 1/8	2 3/4	15	2 3/4	11 1/4	11 5/8	2 3/16	110
766 - 2402	5/8	2 7/16	16 1/2	11 3/4	8 5/8	4 3/8	2	22	2	12 1/2	11 5/8	1 13/16	215
	3/4	2 7/16											
2403 - 5663	1	4 5/6	18	13 3/4	8 5/8	5 7/8	3 1/2	33	3 1/4	11 1/2	11 5/8	1 1/2	365
	1 1/4	5 5/8											
5664 - 12140	1 1/2	4 3/16	21 3/4	17 1/2	12 3/4	7 3/8	5	44	3 3/4	14 1/4	18 3/8	1 1/2	1,015
	1 3/4	5 11/16											
12141 - 23659	1 3/4	4 3/4	26	21 1/4	12 3/4	10 5/16	7 15/16	58	6 5/8	12 3/4	18 3/8	4 5/16	1,640
	2	8 3/4											
	2 1/4	10 3/4											

*Rod Take Out (RTO) is for down travel [Add 6 inches for up travel]

CONSTANTS_200.XLS-04/22/17

Total Travel 6 1/2 to 8 inches

LOAD RANGE (lb.)	J-ROD	RTO*	A	B	C	D	E	F	G	I	L	M	WT (lb.)
25 - 151	1/2	1 9/16	18	12 1/2	6 5/8	5 1/8	1 7/8	12	2 1/4	13 1/2	7 5/8	4 5/8	75
152 - 632	1/2	9/16	18 1/2	13 1/2	8 5/8	5 1/8	1 7/8	15	2 1/4	14	11 5/8	3 5/8	120
633 - 1985	1/2	1/2	19 1/2	13 3/4	8 5/8	5 1/8	1 7/8	22	2 1/4	15	11 5/8	3 13/16	235
	5/8	1/2											
	3/4	1/2											
1986 - 4680	3/4	5/16	20 3/4	14 1/2	8 5/8	5 7/8	2 5/8	33	3	14 3/4	11 5/8	1 5/16	390
	1	2 5/16											
	1 1/4	3 5/16											
4681 - 10033	1 1/4	1 7/8	23 3/4	17 1/2	12 3/4	7 1/8	3 7/8	44	3 1/2	16 3/4	18 3/8	1 1/2	1,030
	1 1/2	2 1/8											
	1 3/4	3 5/8											
10034 - 19552	1 3/4	2 5/8	26 3/4	19 1/4	12 3/4	8 7/8	5 5/8	58	4 3/4	17 1/4	18 3/8	2 1/4	1,610
	2	6 5/8											
	2 1/4	8 5/8											

*Rod Take Out (RTO) is for down travel [Add 8 inches for up travel]

CONSTANTS_200.XLS-04/22/17



FIG. PTP 200-E

CONSTANT

www.pipingtech.com/ptp200-e

Total Travel 8 1/2 to 10 inches

LOAD RANGE (lb.)	J-ROD	RTO*	A	B	C	D	E	F	G	I	L	M	WT (lb.)
21 - 125	1/2	1 9/16	21	14 1/2	6 5/8	6 1/16	2 1/16	12	2 3/4	15 1/2	7 5/8	6 5/8	90
126 - 522	1/2	9/16	21 1/2	15 1/2	8 5/8	6 1/16	2 1/16	15	2 3/4	16	11 5/8	5 5/8	130
523 - 1640	1/2	1/2	22 1/2	15 3/4	8 5/8	6 1/16	2 1/16	22	2 3/4	17	11 5/8	5 13/16	255
	5/8	1/2											
	3/4	1/2											
1641 - 3868	3/4	5/16	23 3/4	16 1/2	8 5/8	6 13/16	2 13/16	33	3 1/2	16 3/4	11 5/8	4	450
	1	2 5/16											
3869 - 8292	1 1/4	1 7/8	26 1/4	18 1/2	12 3/4	7 9/16	3 9/16	44	3 1/2	19 1/4	18 3/8	2 1/2	1,050
	1 1/2	2 1/8											
8293 - 16159	1 1/2	1 3/8	30	21	12 3/4	9 13/16	5 13/16	58	5 1/4	19 1/2	18 3/8	4 1/4	1,650
	1 3/4	2 7/8											
	2	6 7/8											

*Rod Take Out (RTO) is for down travel [Add 10 inches for up travel]

CONSTANTS_200.XLS-04/22/17

Total Travel 10 1/2 to 12 inches

LOAD RANGE (lb.)	J-ROD	RTO*	A	B	C	D	E	F	G	I	L	M	WT (lb.)
17 - 103	1/2	1 9/16	24 1/2	16 1/2	6 5/8	7	2 1/8	12	3 1/4	18	7 5/8	8 5/8	105
104 - 432	1/2	9/16	24 1/2	17 1/2	8 5/8	6 15/16	2 1/16	15	3 1/4	18	11 5/8	7 5/8	150
433 - 1491	1/2	7/16	25	17 3/4	8 5/8	6 13/16	2	22	3 1/8	18 3/4	11 5/8	7 3/4	280
	5/8	7/16											
1492 - 3197	3/4	5/8	25 3/4	17 3/4	8 5/8	7 1/16	2 1/4	33	3 3/8	19	11 5/8	5 9/16	420
	1	2 5/8											
3198 - 6853	1	15/16	28 1/2	20	12 3/4	7 9/16	2 3/4	44	3 5/8	21 1/4	18 3/8	4 1/16	1,090
	1 1/4	1 15/16											
	1 1/2	2 3/16											
6854 - 13354	1 1/2	1 1/8	30	21 1/2	12 3/4	8 1/16	3 1/4	58	3 1/4	23 1/2	18 3/8	4 1/2	1,610
	1 3/4	2 5/8											

*Rod Take Out (RTO) is for down travel [Add 12 inches for up travel]

CONSTANTS_200.XLS-04/22/17

Total Travel 12 1/2 to 14 inches

LOAD RANGE (lb.)	J-ROD	RTO*	A	B	C	D	E	F	G	I	L	M	WT (lb.)
17 - 94	1/2	1 9/16	27	18 1/2	6 5/8	7 13/16	2 1/8	12	3 3/4	19 1/2	7 5/8	10 11/16	120
95 - 392	1/2	9/16	27 1/2	19 1/2	8 5/8	7 7/8	2 1/4	15	3 3/4	20	11 5/8	9 11/16	165
393 - 1232	1/2	7/16	28 1/4	19 3/4	8 5/8	7 13/16	2 1/8	22	3 3/4	20 3/4	11 5/8	9 13/16	310
	5/8	7/16											
1233 - 2906	5/8	3/8	28 3/4	20	8 5/8	7 13/16	2 1/8	33	3 3/4	21 1/4	11 5/8	7 9/16	470
	3/4	3/8											
	1	2 3/8											
2907 - 6230	1	11/16	31 3/4	22 1/4	12 3/4	8 9/16	2 7/8	44	4 1/4	23 1/4	18 3/8	6 1/16	1,155
	1 1/4	1 11/16											
	1 1/2	1 15/16											
6231 - 12140	1 1/2	2 7/8	31	21 3/4	12 3/4	9 1/16	3 3/8	58	3 3/4	23 1/2	18 3/8	6 1/2	1,615
	1 3/4	4 3/8											

*Rod Take Out (RTO) is for down travel [Add 14 inches for up travel]

CONSTANTS_200.XLS-04/22/17