



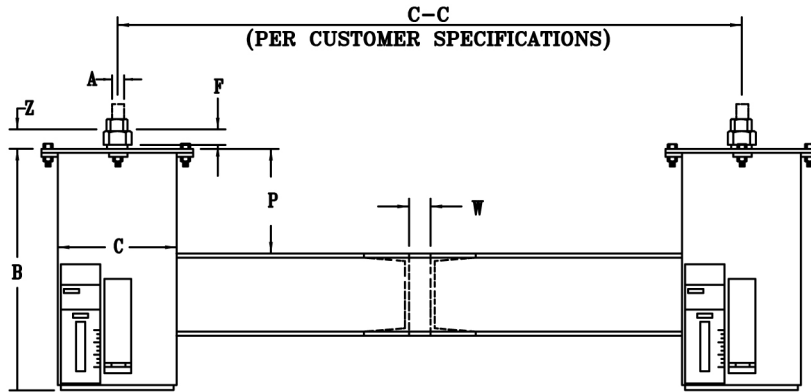
**FIG. PTP-2**

## STANDARD VARIABLE SPRINGS

ENGINEERED SPRING SUPPORTS

[www.pipingtech.com/ptp2-g](http://www.pipingtech.com/ptp2-g)

**TYPE G**



**ORDERING:** Specify figure number, size, type, description, type, operating load and calculated amount and direction of pipe movement from installed to operating position. Please specify any non-standard requirements, i.e. internally guided load column, jacking bolt, lifting lugs, etc.

HANGER SIZE	TYPE G											
	APPROX. WEIGHT	ROD SIZE	CASING LENGTH	CASING DIA.	MIN. THREAD ENGAGEMENT	MAX. PIPE SIZE	MAX. C-C DIM.	CHANNEL SIZE	SPACING BETWEEN CHANNELS	P	Z	
	lb.	A	B	C	F	W						
00	28	1/2	7	4	7/8	12	24	C3 x 4.1	5/8	1 1/2	13/16	
10	29	1/2	7 27/32	4	7/8	12	24	C3 x 4.1	5/8	1 1/2	23/32	
20	30	1/2	8 5/8	4	7/8	12	24	C3 x 4.1	5/8	1 1/2	11/16	
30	37	1/2	7 11/16	5 9/16	7/8	16	30	C3 x 4.1	3/4	2	1	
40	38	1/2	8 1/4	5 9/16	7/8	16	30	C3 x 4.1	3/4	2	3/4	
50	39	1/2	9	5 9/16	7/8	16	30	C3 x 4.1	3/4	2	7/8	
60	57	5/8	8 15/16	6 5/8	1 1/16	20	36	C3 x 4.1	1	2	1	
70	63	5/8	9 7/8	6 5/8	1 1/16	20	36	C3 x 4.1	1	2	1 1/8	
80	67	5/8	10 3/8	6 5/8	1 1/16	20	36	C3 x 4.1	1	2	1 1/8	
90	123	3/4	10 7/16	8 5/8	1 5/16	20	36	C4 x 5.4	1 1/4	3	2 3/16	
100	137	3/4	11 5/8	8 5/8	1 5/16	20	36	C4 x 5.4	1 1/4	3	1 3/4	
110	125	3/4	9 7/16	8 5/8	1 5/16	20	36	C4 x 5.4	1 1/4	3	2 3/8	
120	137	1	10 1/4	8 5/8	1 9/16	20	36	C5 x 6.7	1 1/2	4	2 1/16	
130	175	1	12 3/4	8 5/8	1 3/4	20	36	C5 x 6.7	1 1/2	4	1 1/4	
140	183	1 1/4	13 1/4	8 5/8	1 3/4	16	33	C5 x 6.7	1 1/2	4	1 1/2	
150	224	1 1/4	13 1/8	8 5/8	1 7/8	20	36	C6 x 10.5	2 1/8	4	2 3/8	
160	270	1 1/2	15 5/8	8 5/8	2 3/16	20	36	C8 x 11.5	2 1/8	4	2 3/4	
170	326	1 3/4	17 3/4	8 5/8	2 7/16	20	36	C8 x 11.5	2 1/8	4	3 7/16	
180	630	2	19 7/8	12 3/4	2 13/16	20	42	C12 x 20.7	2 3/8	4	1 3/8	
190	723	2 1/4	22 1/8	12 3/4	3 1/16	20	42	C12 x 20.7	2 5/8	4	1 5/8	
200	933	2 1/2	27 1/8	12 3/4	3 5/16	20	40	C12 x 20.7	2 7/8	4	1 5/8	
210	1,137	2 3/4	29 13/16	12 3/4	3 11/16	24	48	C15 x 33.9	3 1/8	4	1 1/4	
220	1,436	3	35 1/2	12 3/4	3 15/16	24	48	C15 x 33.9	3 3/8	4	1 11/16	

SPRING.XLS-08/14/09