

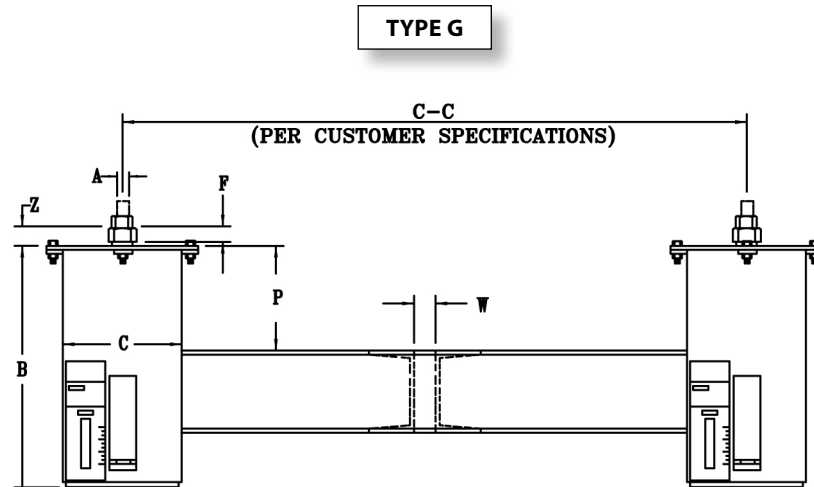


FIG. PTP-4

DOUBLE VARIABLE SPRINGS

www.pipingtech.com/ptp4-g

ENGINEERED SPRING SUPPORTS



ORDERING: Specify figure number, size, type, description, type, operating load and calculated amount and direction of pipe movement from installed to operating position. Please specify any non-standard requirements, i.e. internally guided load column, jacking bolt, lifting lugs, etc.

HANGER SIZE	TYPE G											
	APPROX. WEIGHT	ROD SIZE	CASING LENGTH	CASING DIA.	MIN. THREAD ENGAGEMENT	MAX. PIPE SIZE	MAX. C-C DIM.	CHANNEL SIZE	SPACING BETWEEN CHANNELS			
	lb.	A	B	C	F				W	P	Z	
00	35	1/2	13 1/4	4	7/8	12	24	C3 x 4.1	5/8	1 1/2	1 7/8	
10	39	1/2	15	4	7/8	12	24	C3 x 4.1	5/8	1 1/2	1 11/16	
20	43	1/2	16 1/2	4	7/8	12	24	C3 x 4.1	5/8	1 1/2	1 11/16	
30	51	1/2	14 5/8	5 9/16	7/8	16	30	C3 x 4.1	3/4	2	1 7/8	
40	57	1/2	15 3/4	5 9/16	7/8	16	30	C3 x 4.1	3/4	2	1 1/16	
50	61	1/2	17 1/4	5 9/16	7/8	16	30	C3 x 4.1	3/4	2	1 15/16	
60	87	5/8	17	6 5/8	1 1/16	20	36	C3 x 4.1	1	2	2 1/8	
70	103	5/8	18 7/8	6 5/8	1 1/16	20	36	C3 x 4.1	1	2	2 1/4	
80	127	5/8	19 7/8	6 5/8	1 1/16	20	36	C3 x 4.1	1	2	2 1/4	
90	187	3/4	19 13/16	8 5/8	1 5/16	20	36	C4 x 5.4	1 1/4	3	1 15/16	
100	221	3/4	22 3/16	8 5/8	1 5/16	20	36	C4 x 5.4	1 1/4	3	2	
110	189	3/4	17 13/16	8 5/8	1 5/16	20	36	C4 x 5.4	1 1/4	3	2 3/4	
120	213	1	19 1/4	8 5/8	1 9/16	20	36	C5 x 6.7	1 1/2	4	3 1/16	
130	285	1	24 1/4	8 5/8	1 3/4	20	36	C5 x 6.7	1 1/2	4	2 3/8	
140	303	1 1/4	25	8 5/8	1 3/4	16	33	C5 x 6.7	1 1/2	4	2 5/8	
150	342	1 1/4	25	8 5/8	1 7/8	20	36	C6 x 10.5	2 1/8	4	4 1/8	
160	434	1 1/2	29 1/2	8 5/8	2 3/16	20	36	C8 x 11.5	2 1/8	4	4 5/16	
170	544	1 3/4	33 3/4	8 5/8	2 7/16	20	36	C8 x 11.5	2 1/8	4	5 3/16	
180	996	2	34 7/8	12 3/4	2 13/16	20	42	C12 x 20.7	2 3/8	4	3 3/8	
190	1,171	2 1/4	39 3/8	12 3/4	3 1/16	20	42	C12 x 20.7	2 5/8	4	3 5/8	
200	1,573	2 1/2	47 5/8	12 3/4	3 5/16	20	40	C12 x 20.7	2 7/8	4	3 5/8	
210	1,905	2 3/4	52 1/4	12 3/4	3 11/16	24	48	C15 x 33.9	3 1/8	4	3 7/8	
220	2,506	3	64 3/8	12 3/4	3 15/16	24	48	C15 x 33.9	3 3/8	4	4 1/8	

SPRING.XLS-09/17/09