

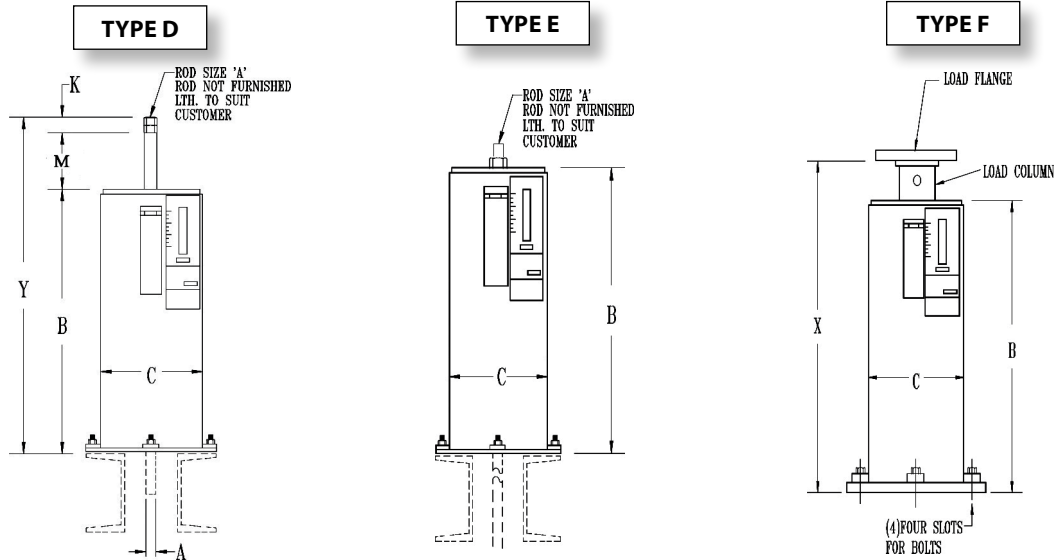


FIG. PTP-6

TRIPLE VARIABLE SPRINGS

www.pipingtech.com/ptp6-def

ENGINEERED SPRING SUPPORTS



ORDERING: Specify figure number, size, type, description, type, operating load and calculated amount and direction of pipe movement from installed to operating position. Please specify any non-standard requirements, i.e. internally guided load column, jacking bolt, lifting lugs, etc.

HANGER SIZE	TYPES D & E					TYPE F									
	CASING LENGTH	ROD LENGTH	NUT ALLOW.	SPACER HEIGHT	APPROX. WEIGHT OF EACH	CASING LENGTH	BOTTOM FLANGE	BOTTOM FLANGE BOLT CIRCLE		BOTTOM FLANGE BOLTS	LOAD COLUMN DIA.	LOAD FLANGE	LOADED LENGTH X		APPROX. WEIGHT
	B	Y	K	M	lb.	B	THK. X SQ.	MIN.	MAX.			THK. X SQ.	MIN.	MAX.	lb.
00	19 1/4	28 3/16	1 1/4	8 1/2	17	19 1/4	1/4 x 7 1/2	7	8 3/4	5/8	1.900	3/16 x 3 13/16	20 7/8	22 7/8	29
10	21 7/8	31	1 1/4	8 1/2	20	21 7/8	1/4 x 7 1/2	7	8 3/4	5/8	1.900	3/16 x 3 13/16	23 1/2	25 1/2	30
20	24 1/8	33 1/4	1 1/4	8 1/2	23	24 1/8	1/4 x 7 1/2	7	8 3/4	5/8	1.900	3/16 x 3 13/16	25 3/4	27 3/4	33
30	21 3/8	30 7/16	1 1/4	8 1/2	29	21 3/8	1/4 x 7 1/2	7 3/4	8 3/4	3/4	2.875	3/16 x 5 1/4	23	25	50
40	23	32 5/16	1 1/4	8 1/2	33	23	1/4 x 7 1/2	7 3/4	8 3/4	3/4	2.875	3/16 x 5 1/4	24 5/8	26 5/8	56
50	25 1/4	34 3/8	1 1/4	8 1/2	36	25 1/4	1/4 x 7 1/2	7 3/4	8 3/4	3/4	2.875	3/16 x 5 1/4	26 7/8	28 7/8	59
60	24 7/8	34 5/8	1 1/2	8 1/2	56	24 7/8	3/8 x 9	8 1/8	10 7/8	3/4	3.500	1/4 x 6 5/16	26 1/2	28 1/2	89
70	27 5/8	37 9/16	1 1/2	8 1/2	68	27 5/8	3/8 x 9	8 1/8	10 7/8	3/4	3.500	1/4 x 6 5/16	29 1/4	31 1/4	104
80	29 1/8	38 15/16	1 1/2	8 1/2	74	29 1/8	3/8 x 9	8 1/8	10 7/8	3/4	3.500	1/4 x 6 5/16	30 3/4	32 3/4	108
90	28 15/16	39 11/16	1 3/4	8 1/2	126	28 15/16	1/2 x 13 1/4	12 1/4	16 1/2	3/4	4.500	1/2 x 8 1/4	30 9/16	32 9/16	189
100	32 1/2	43 1/8	1 3/4	8 1/2	147	32 1/2	1/2 x 13 1/4	12 1/4	16 1/2	3/4	4.500	1/2 x 8 1/4	34 1/8	36 1/8	210
110	25 15/16	37 1/16	2	8 1/2	128	25 15/16	1/2 x 13 1/4	12 1/4	16 1/2	3/4	4.500	1/2 x 8 1/4	27 9/16	29 9/16	186
120	28	39 3/16	2 1/4	8 1/2	141	28	1/2 x 13 1/4	12 1/4	16 1/2	3/4	4.500	1/2 x 8 1/4	29 5/8	31 5/8	201
130	35 1/2	47 1/8	2 1/2	8 1/2	194	35 1/2	1/2 x 13 1/4	12 1/4	16 1/2	3/4	4.500	1/2 x 8 1/4	37 1/8	39 1/8	257
140	36 3/8	47 1/2	2 1/2	8 1/2	206	36 3/8	1/2 x 13 1/4	12 1/4	16 1/2	3/4	4.500	1/2 x 8 1/4	38	40	267
150	36 3/8	48 1/4	3	8 1/2	224	36 3/8	1/2 x 13 1/4	12 1/4	16 1/2	3/4	4.500	1/2 x 8 1/4	38	40	281
160	43 1/8	55 11/16	3 1/2	8 1/2	282	43 1/8	1/2 x 13 1/4	12 1/4	16 1/2	3/4	4.500	1/2 x 8 1/4	44 3/4	46 3/4	341
170	49 1/2	62 1/8	4	8 1/2	350	49 1/2	1/2 x 13 1/4	12 1/4	16 1/2	3/4	4.500	1/2 x 8 1/4	51 1/8	53 1/8	410
180	49 5/8	61 3/16	4 3/16	8 1/2	671	47 1/8	5/8 x 17 1/4	17 3/4	22	3/4	5.563	1/2 x 12 1/2	48 3/4	50 3/4	780
190	56 3/8	63 3/8	5	8 1/2	777	53 7/8	5/8 x 17 1/4	17 3/4	22	3/4	5.563	1/2 x 12 1/2	55 1/2	57 1/2	891
200	66 5/8	78 1/16	5 9/16	8 1/2	1,040	64	3/4 x 17 1/4	17 3/4	22	3/4	5.563	1/2 x 12 1/2	64 5/8	66 5/8	1,166
210	73 1/8	86 3/16	6 1/4	8 1/2	1,223	70 7/8	3/4 x 17 1/4	17 3/4	22	3/4	5.563	1/2 x 12 1/2	71 1/8	73 1/8	1,263
220	91 3/8	107 3/4	6 5/8	8 1/2	1,665	89 1/8	3/4 x 17 1/4	17 3/4	22	3/4	5.563	1/2 x 12 1/2	89	91	1,731