



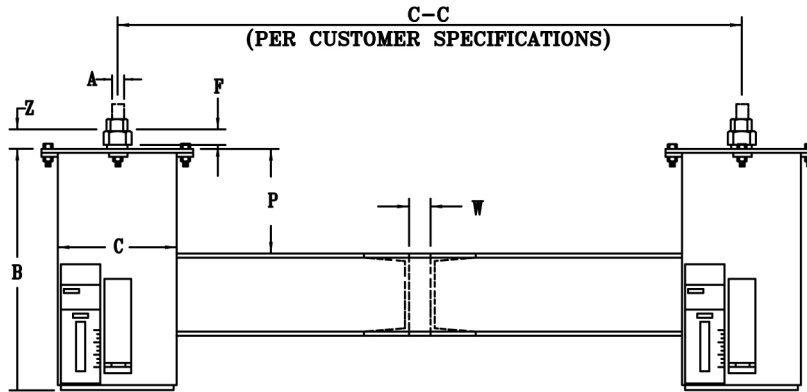
**FIG. PTP-6**

## TRIPLE VARIABLE SPRINGS

ENGINEERED SPRING SUPPORTS

[www.pipingtech.com/ptp6-g](http://www.pipingtech.com/ptp6-g)

**TYPE G**



**ORDERING:** Specify figure number, size, type, description, type, operating load and calculated amount and direction of pipe movement from installed to operating position. Please specify any non-standard requirements, i.e. internally guided load column, jacking bolt, lifting lugs, etc.

HANGER SIZE	TYPE G										
	APPROX. WEIGHT	ROD SIZE	CASING LENGTH	CASING DIA.	MIN. THREAD ENGAGEMENT	MAX. PIPE SIZE	MAX. C-C DIM.	CHANNEL SIZE	SPACING BETWEEN CHANNELS	P	Z
	lb.	A	B	C	F			W			
00	53	1/2	19 1/4	4	7/8	12	24	C3 x 4.1	5/8	1 1/2	1 1/2
10	59	1/2	21 7/8	4	7/8	12	24	C3 x 4.1	5/8	1 1/2	2 1/2
20	65	1/2	24 1/8	4	7/8	12	24	C3 x 4.1	5/8	1 1/2	2 1/2
30	77	1/2	21 3/8	5 9/16	7/8	16	30	C3 x 4.1	3/4	2	2 1/2
40	86	1/2	23	5 9/16	7/8	16	30	C3 x 4.1	3/4	2	2 1/2
50	92	1/2	25 1/4	5 9/16	7/8	16	30	C3 x 4.1	3/4	2	2 1/2
60	131	5/8	24 7/8	6 5/8	1 1/16	20	36	C3 x 4.1	1	2	2 5/8
70	155	5/8	27 5/8	6 5/8	1 1/16	20	36	C3 x 4.1	1	2	2 3/4
80	191	5/8	29 1/8	6 5/8	1 1/16	20	36	C3 x 4.1	1	2	2 3/4
90	281	3/4	28 15/16	8 5/8	1 5/16	20	36	C4 x 5.4	1 1/4	3	2 3/4
100	332	3/4	32 1/2	8 5/8	1 5/16	20	36	C4 x 5.4	1 1/4	3	2 3/4
110	284	3/4	25 15/16	8 5/8	1 5/16	20	36	C4 x 5.4	1 1/4	3	3 1/4
120	320	1	28	8 5/8	1 9/16	20	36	C5 x 6.7	1 1/2	4	3 9/16
130	428	1	35 1/2	8 5/8	1 3/4	20	36	C5 x 6.7	1 1/2	4	2 7/8
140	455	1 1/4	36 3/8	8 5/8	1 3/4	16	33	C5 x 6.7	1 1/2	4	3 1/8
150	513	1 1/4	36 3/8	8 5/8	1 7/8	20	36	C6 x 10.5	2 1/8	4	4 5/16
160	651	1 1/2	43 1/8	8 5/8	2 3/16	20	36	C8 x 11.5	2 1/8	4	4 13/16
170	816	1 3/4	49 1/2	8 5/8	2 7/16	20	36	C8 x 11.5	2 1/8	4	5 11/16
180	1,494	2	49 5/8	12 3/4	2 13/16	20	42	C12 x 20.7	2 3/8	4	4 7/16
190	1,747	2 1/4	56 3/8	12 3/4	3 1/16	20	42	C12 x 20.7	2 5/8	4	4 11/16
200	2,360	2 1/2	66 5/8	12 3/4	3 5/16	20	40	C12 x 20.7	2 7/8	4	4 9/16
210	2,858	2 3/4	73 1/8	12 3/4	3 11/16	24	48	C15 x 33.9	3 1/8	4	5 5/16
220	3,759	3	91 3/8	12 3/4	3 15/16	24	48	C15 x 33.9	3 3/8	4	5 9/16

SPRING.XLS-09/17/09