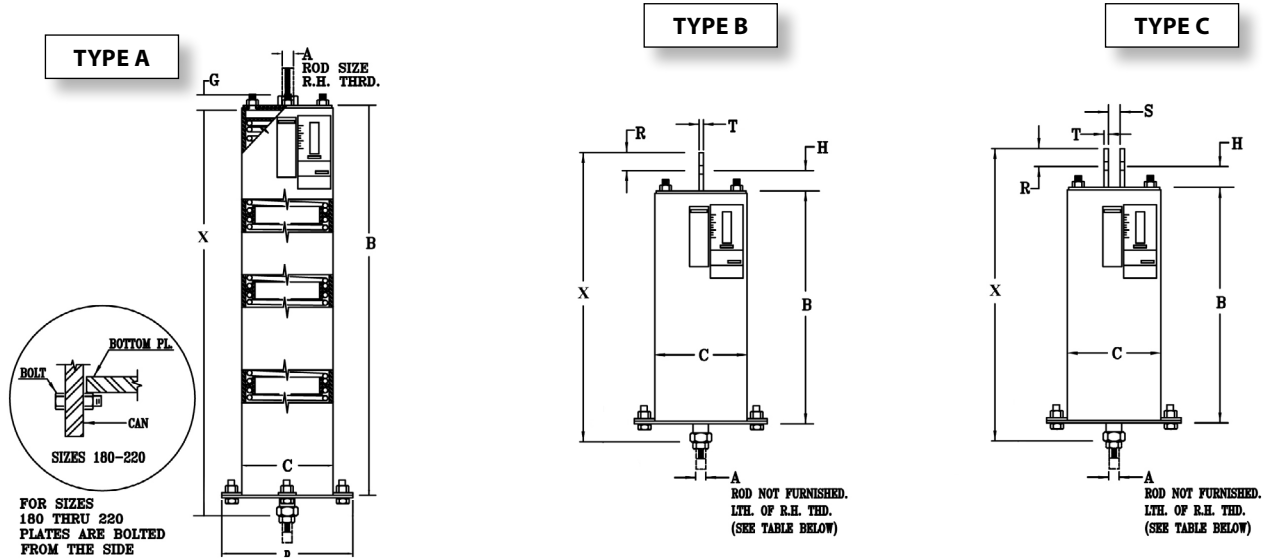




## FIG. PTP-8

## QUADRUPLE VARIABLE SPRINGS

www.pipingtech.com/ptp8-abc



**ORDERING:** Specify figure number, size, type, description, type, operating load and calculated amount and direction of pipe movement from installed to operating position. Please specify any non-standard requirements, i.e. internally guided load column, jacking bolt, lifting lugs, etc.

GENERAL DIMENSIONS FOR FIG. PTP-8				TYPE A		TYPES B & C								TYPES A, B & C	
HANGER SIZE	ROD SIZE	CASING DIA.	BOTT. PLATE DIA.	CASING LENGTH	LOADED LENGTH X		CASING LENGTH	LUG HOLE SIZE	HEIGHT OF PIN	R	CLEVIS OPENING	THICKNESS	LOADED LENGTH X		APPROX. WEIGHT OF EACH
	A	C	D	B	MIN.	MAX.	B	E	H		S	T	MIN.	MAX.	lb.
00	1/2	4	6 1/8	25 1/2	26 1/2	35 1/2	25 1/2	11/16	1 1/2	1 1/4	7/8	1/4	29 1/4	38 1/4	22
10	1/2	4	6 1/8	29	30	39	29	11/16	1 1/2	1 1/4	7/8	1/4	32 3/4	41 3/4	26
20	1/2	4	6 1/8	32	33	42	32	11/16	1 1/2	1 1/4	7/8	1/4	35 3/4	44 3/4	30
30	1/2	5 9/16	7 5/8	28	29	38	28	11/16	1 1/2	1 1/4	7/8	1/4	31 3/4	40 3/4	40
40	1/2	5 9/16	7 5/8	30 1/2	31 1/2	40 1/2	30 1/2	11/16	1 1/2	1 1/4	7/8	1/4	34 1/4	43 1/4	46
50	1/2	5 9/16	7 5/8	33 1/4	34 1/4	43 1/4	33 1/4	11/16	1 1/2	1 1/4	7/8	1/4	37	46	50
60	5/8	6 5/8	8 7/8	33	34 1/4	43 1/4	33	13/16	1 1/2	1 1/4	1 1/16	1/4	37	46	76
70	5/8	6 5/8	8 7/8	36 5/8	37 7/8	46 7/8	36 5/8	13/16	1 1/2	1 1/4	1 1/16	1/4	40 5/8	49 5/8	92
80	5/8	6 5/8	8 7/8	38 5/8	39 7/8	48 7/8	38 5/8	13/16	1 1/2	1 1/4	1 1/16	1/4	42 5/8	51 5/8	116
90	3/4	8 5/8	11 5/8	38 3/8	39 1/2	48 1/2	38 3/8	15/16	1 1/2	1 1/4	1 1/4	3/8	42 1/4	51 1/4	174
100	3/4	8 5/8	11 5/8	43 1/8	43 1/4	52 1/4	43 1/8	15/16	1 1/2	1 1/4	1 1/4	3/8	46	55	208
110	3/4	8 5/8	11 5/8	34 3/8	36	45	34 3/8	15/16	1 1/2	1 1/4	1 1/4	3/8	38 3/4	47 3/4	176
120	1	8 5/8	11 5/8	37 1/8	38 15/16	47 15/16	37 1/8	1 1/4	2	1 1/2	1 5/8	1/2	42 7/16	51 7/16	196
130	1	8 5/8	11 5/8	47 1/8	48 3/8	57 3/8	47 1/8	1 1/4	2	1 1/2	1 5/8	1/2	51 7/8	60 7/8	268
140	1 1/4	8 5/8	11 5/8	48 1/8	49 5/8	58 5/8	48 1/8	1 1/2	3	2	2	5/8	54 5/8	63 5/8	286
150	1 1/4	8 5/8	11 5/8	48 1/8	51 1/2	60 1/2	48 1/8	1 1/2	3	2	2	5/8	56 1/2	65 1/2	316
160	1 1/2	8 5/8	11 5/8	57 3/8	58 13/16	67 13/16	57 3/8	1 3/4	3	2 1/2	2 3/8	3/4	64 5/16	73 5/16	408
170	1 3/4	8 5/8	11 5/8	65 3/4	67 7/16	76 7/16	65 3/4	2	3	2 1/2	2 3/8	3/4	72 15/16	81 15/16	518
180	2	12 3/4	N/A	65	67 11/16	76 11/16	65	2 3/8	4	3	2 7/8	3/4	74 11/16	83 11/16	964
190	2 1/4	12 3/4	N/A	74	76 15/16	85 15/16	74	2 5/8	4 1/2	3	3 1/8	3/4	84 7/16	93 7/16	1,140
200	2 1/2	12 3/4	N/A	87 5/8	90 5/16	99 5/16	87 5/8	2 7/8	4 1/2	4	3 1/4	1	98 13/16	107 13/16	1,544
210	2 3/4	12 3/4	N/A	96 7/8	100 1/16	109 1/16	96 7/8	3 1/8	4 1/2	4	3 5/8	1	108 9/16	117 9/16	1,820
220	3	12 3/4	N/A	121 1/8	124 9/16	133 9/16	121 1/8	3 3/8	5	4	3 7/8	1	133 9/16	142 9/16	2,420

SPRING.XLS-09/02/11

ENGINEERED SPRING SUPPORTS