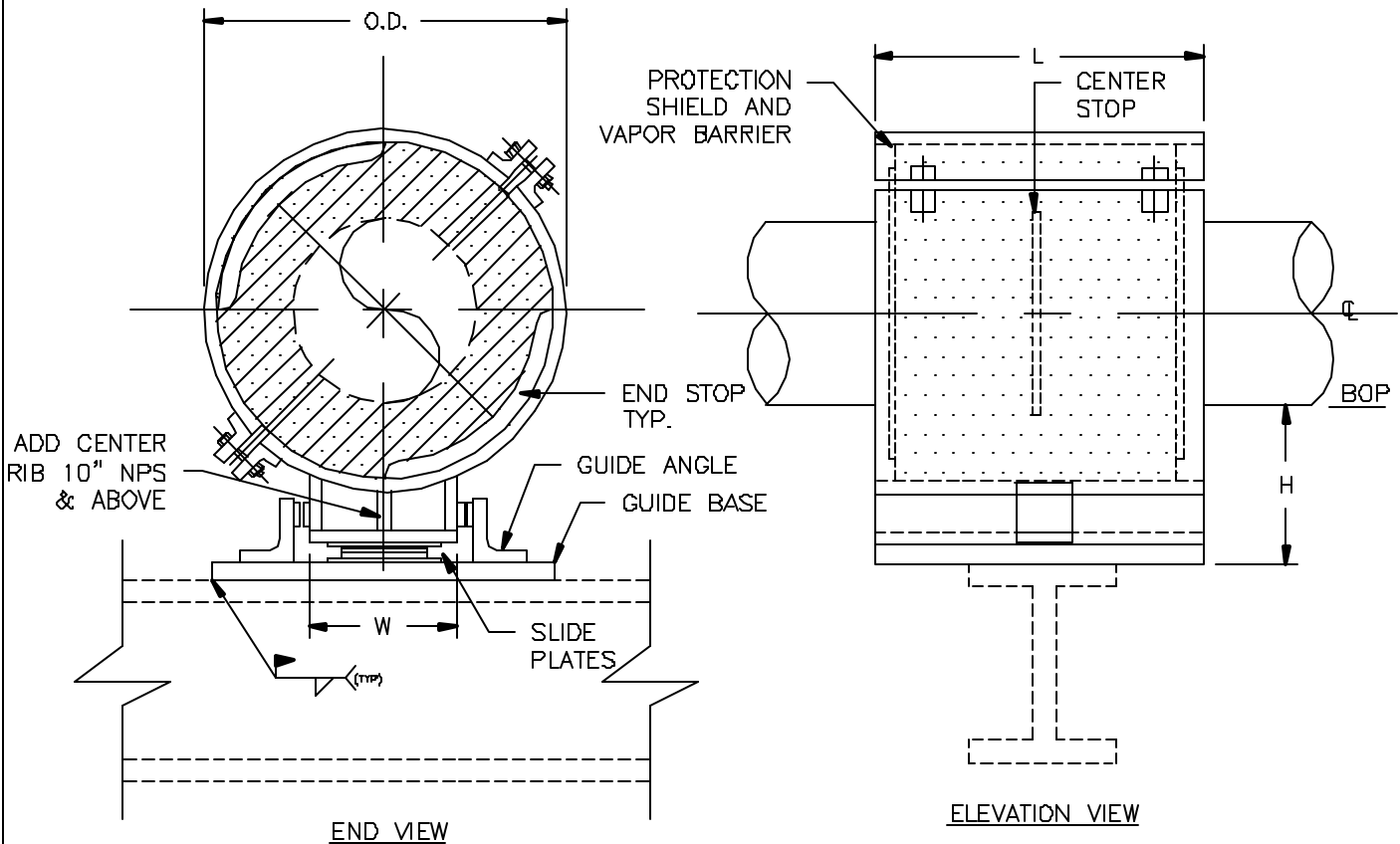


## SPECIFICATIONS

INSULATION THK: \_\_\_\_\_  
 SHOE LENGTH \_\_\_\_\_  
 LOADS: VERTICAL \_\_\_\_\_  
           LATERAL \_\_\_\_\_  
           AXIAL \_\_\_\_\_  
 MOVEMENT: LATER. \_\_\_\_\_  
               AXIAL \_\_\_\_\_  
 TEMPERATURE: \_\_\_\_\_



Design, PT&P 6/2/1999 102 PM HS-3030

## NOTES

FIGURE#: HS-3030  
 DESCRIPTION: SLIDING SHOES, DOUBLE-T-BASE, GUIDED, WITH THRUST PLATES

FUNCTION:	USE TO SUPPORT VERTICAL LOADS. LATERAL MOVEMENT LIMITED BY GUIDES. MOVEMENT OF PIPE INSIDE THE HOTSHOE LIMITED BY CENTER STOP AND END STOPS. SHOE ALLOWED TO SLIDE IN AXIAL DIRECTION.
PIPE SIZE:	24" TO 42" NPS
MATERIAL:	GALVANIZED OR HDG CARBON STEEL
INSULATION:	HIGH DENSITY CALCIUM SILICATE
TEMP RANGE:	AMBIENT TO 1200°F
LAYERING SY:	SEE LAYERING CHARTS
SHOE LTH,(L):	STANDARD SHOE AVAILABLE IN 12" & 18" LENGTHS
TO ORDER:	SPECIFY PIPE SIZE, INSULATION THK., LENGTH HENCE: (HS-3030)-NPS-THK.-L
LOADS:	ALL LOADS ON ADJACENT CHART HAVE A SAFETY FACTOR OF 5

CLIENT NAME: \_\_\_\_\_  
 PROJECT NAME: \_\_\_\_\_  
 REQUISITION#: \_\_\_\_\_  
 P.O.#: \_\_\_\_\_  
 DWG#: \_\_\_\_\_  
 MARK#: \_\_\_\_\_  
 PT&P JOB#: \_\_\_\_\_ ITEM#: \_\_\_\_\_  
 DATE: \_\_\_\_\_

## PIPING TECHNOLOGY & PRODUCTS, INC.

P.O. BOX 34506      HOUSTON TEXAS 77234  
 3701 HOLMES RD.      HOUSTON TEXAS 77051  
 TELE#: (713) 731-0030      FAX#: (713) 731-8640  
<http://www.pipingtech.com/>      E-MAIL: info@pipingtech.com





Cart with High Density Calcium Silicate Cut-Outs for Hotshoe

Pipe size	L=12" Vertical Load(lbs)	L=18" Vertical Load(lbs)	Insulation Thickness											
			1"			1-1/2"			2"			2-1/2"		
			W	O.D.	H	W	O.D.	H	W	O.D.	H	W	O.D.	H
24"	5969	7958	12"	27"	4"	12"	28"	4"	13"	29"	6"	13"	30"	6"
26"	6466	8621	14"	29-1/2"	4"	14"	30-1/2"	6"	15"	31-1/2"	6"	15-1/2"	32-1/2"	6"
28"	6963	9284	14-1/2"	31-1/2"	4"	15"	32-1/2"	6"	15-1/2"	33-1/2"	6"	16"	34-1/2"	6"
30"	7461	9948	16"	33-1/2"	4"	16-1/2"	34-1/2"	6"	18"	35-1/2"	6"	18"	36-1/2"	6"
32"	7958	10611	18"	35-1/2"	4"	18-1/2"	36-1/2"	6"	18-1/2"	37-1/2"	6"	19"	38-1/2"	6"
34"	8455	11274	18"	37-1/2"	4"	18-1/2"	38-1/2"	6"	19"	39-1/2"	6"	20"	40-1/2"	6"
36"	8953	11937	19"	39-1/2"	4"	19"	40-1/2"	6"	19-1/2"	41-1/2"	6"	19-1/2"	42-1/2"	6"
40"	9948	13263	18"	43-1/2"	4"	18"	44-1/2"	6"	19"	45-1/2"	6"	20"	46-1/2"	6"
42"	10445	13927	18"	45-1/2"	4"	19"	46-1/2"	6"	20"	47-1/2"	6"	21"	48-1/2"	6"

Pipe size	L=12" Vertical Load(lbs)	L=18" Vertical Load(lbs)	Insulation Thickness								
			3"			3-1/2"			4"		
			W	O.D.	H	W	O.D.	H	W	O.D.	H
24"	5969	7958	14"	31"	6"	16"	32"	6"	16"	33"	8"
26"	6466	8621	16"	33-1/2"	6"	16"	34-1/2"	6"	16"	35-1/2"	8"
28"	6963	9284	16"	35-1/2"	6"	17"	36-1/2"	6"	16-1/2"	37-1/2"	8"
30"	7461	9948	20"	37-1/2"	6"	20"	38-1/2"	6"	20"	39-1/2"	8"
32"	7958	10611	20"	39-1/2"	6"	21"	40-1/2"	6"	21"	41-1/2"	8"
34"	8455	11274	21-1/2"	41-1/2"	6"	22"	42-1/2"	6"	21-1/2"	43-1/2"	8"
36"	8953	11937	20"	43-1/2"	6"	21"	44-1/2"	6"	21"	45-1/2"	8"
40"	9948	13263	21"	47-1/2"	6"	22"	48-1/2"	6"	22"	49-1/2"	8"
42"	10445	13927	22"	49-1/2"	6"	23"	50-1/2"	6"	23"	51-1/2"	8"