



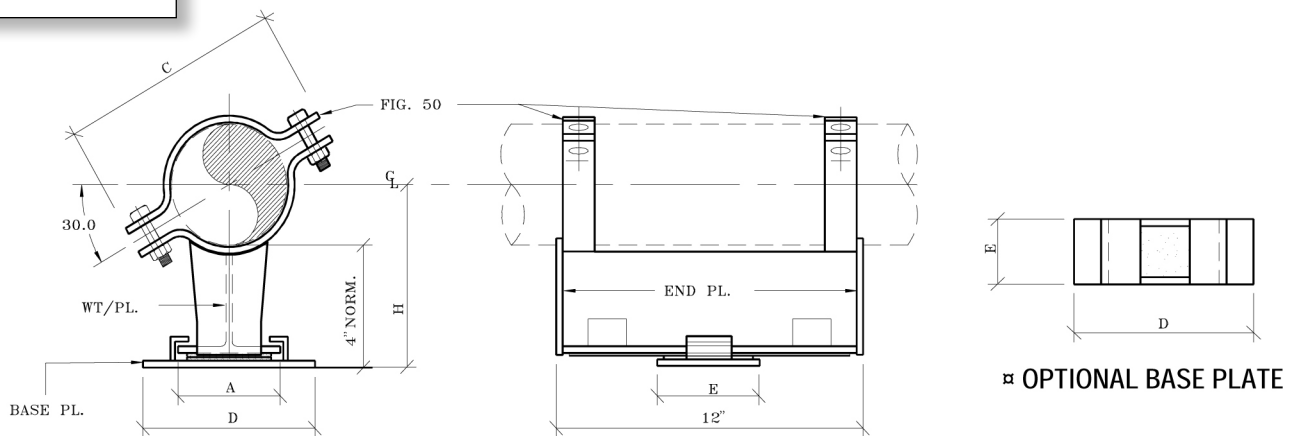
FIG. 1100

BOLT CRADLE SUPPORT WITH GUIDE & SLIDE PLATE CRADLED GUIDED SUPPORT

www.pipingtech.com/fig1100

- MATERIAL:** Carbon steel
- FINISH:** Painted or hot dipped galvanized.
- OPTIONS:** Modifications in the dimensions A, C, D, E, and the slide plate material (PTFE, 25% glass filled or graphite) available upon request.
- ORDERING:** Specify figure number, pipe size, description, type, quantity, finish and slide plate material.
- ALLOWABLE LOADS:** The allowable vertical loads depend upon the pipe pressure and wall thickness.
- BONDING:** Graphite slide plates are usually bonded. For high temperature service above 500 °F specify bolted construction.

WELDED BASE



PIPE SIZE	A	C	D	E	H
2	4	5 1/2	7 1/4	5	5 3/16
2 1/2	4	6 3/8	7 1/4	5	5 7/16
3	4	7	7 1/4	5	5 3/4
4	4	8 9/16	7 1/4	5	6 1/4
5	4	9 11/16	7 1/4	5	6 13/16
6	4	11 5/8	7 1/4	5	7 5/16
8	4	13 7/8	7 1/4	5	8 5/16
10	4	17	7 1/4	5	9 3/8
12	4	18 15/16	7 1/4	5	10 3/8
14	4	21	7 1/4	5	11
16	4	23	7 1/4	5	12
18	7	25 7/8	10 3/4	5 1/2	13
20	7	28	10 3/4	5 1/2	14
24	7	33 1/2	11 1/4	5 1/2	16

PIPESH0ES01.XLS-07/17/09