



FIG. 72

WELDING LUG

www.pipingtech.com/fig72

MATERIAL: Carbon steel

ORDERING: Specify figure number, rod size, description and finish.

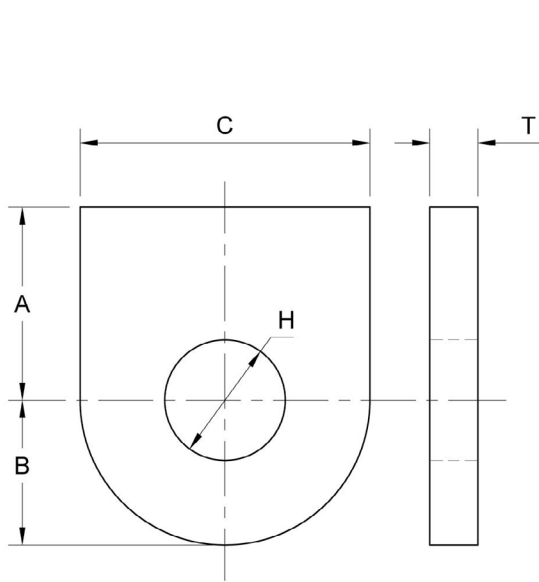


FIG. 72 STANDARD WELDING LUG

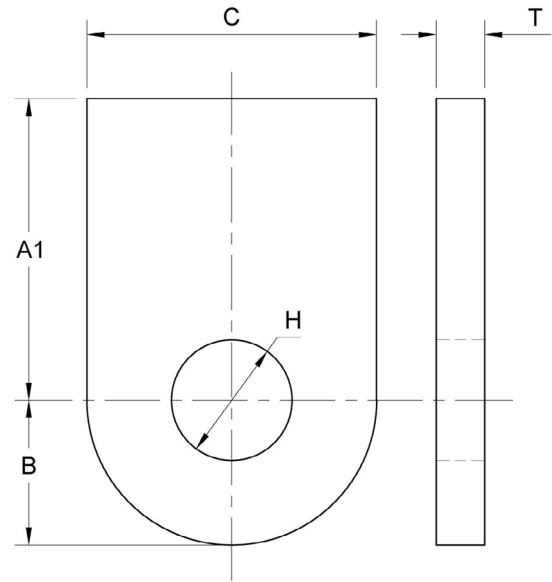


FIG. 72L LONG WELDING LUG

SUPPORT ASSEMBLY COMPONENTS

ROD SIZE	Fig. 72 Standard A	Fig. 72 Long A1	B	C	H	T	MAX.LOAD (lb.)
1/2	1 1/2	3	1 1/4	2 1/2	11/16	1/4	1,350
5/8	1 1/2	3	1 1/4	2 1/2	13/16	1/4	2,160
3/4	1 1/2	3	1 1/4	2 1/2	15/16	3/8	3,230
7/8	2	3	1 1/4	2 1/2	1 1/8	3/8	4,480
1	2	3	1 1/2	3	1 1/4	1/2	5,900
1 1/8	3	4	1 1/2	3	1 3/8	1/2	6,230
1 1/4	3	4	2	4	1 1/2	5/8	9,500
1 1/2	3	4 1/2	2 1/2	5	1 3/4	3/4	13,800
1 3/4	3	4 1/2	2 1/2	5	2	3/4	18,600
2	4	4 1/2	3	6	2 3/8	3/4	24,600
2 1/4	4 1/2	5	3	6	2 5/8	3/4	32,300
2 1/2	4 1/2	5	4	8	2 7/8	1	39,800
2 3/4	4 1/2	5	4	8	3 1/8	1	49,400
3	5	5 1/2	4	8	3 3/8	1	60,100

SCOMPONENTS03.XLS-04/22/17