

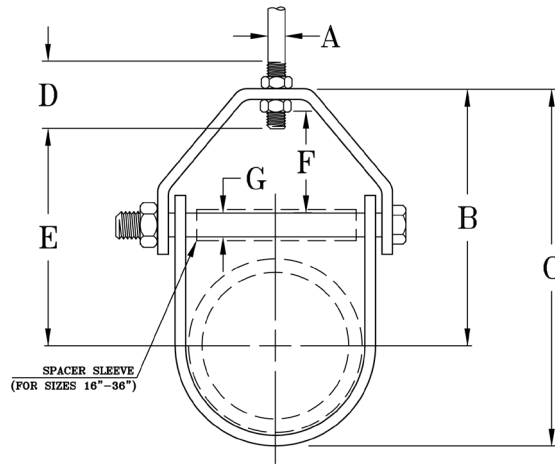


FIG. 83

ADJUSTABLE CLEVIS HANGER

www.pipingtech.com/fig83

- SIZE:** 1/2" thru 30"
- MATERIAL:** Carbon steel
- FINISH:** Black or galvanized; furnished black unless otherwise specified.
- SERVICE:** Recommended for the suspension of non-insulated, stationary pipe lines.
- MAX. TEMP.:** 650 °F
- FEATURES:** Designed with the yoke on outside of lower U-Strap so the yoke cannot slide toward the center of the bolt, thus bending of the bolt is minimized. Spacer sleeve used for size 16" thru 36".
- COMPONENTS:** Top yoke, bottom strap, and bolt or stud with nut-assembled.
- INSTALLATION:** Hanger load nut ABOVE clevis must be tightened securely to assure proper hanger performance.
- ORDERING:** Specify figure number, pipe size, description and finish.



NOTE: Punched forming holes may be present on certain sizes of this clevis hanger. These holes are solely for the purpose of manufacturing and do not affect the structural integrity or load carrying capacities of these hangers.

PIPE SIZE	MAX. RECOM. LOAD (lb.)	APPROX. WEIGHT (lb. per 100)	SIZE OF STEEL		A	B	C	D	E	ADJUST.	
			UPPER	LOWER						F	G
1/2	730	34	1/8 x 1	1/8 x 1	3/8	1 11/16	2 1/8	2 1/2	7/8	7/16	1/4
3/4	730	39	1/8 x 1	1/8 x 1	3/8	1 7/8	2 7/16	2 1/2	1	1/2	1/4
1	730	44	1/8 x 1	1/8 x 1	3/8	2 1/8	2 13/16	2 1/2	1 1/4	5/8	1/4
1 1/4	730	45	1/8 x 1	1/8 x 1	3/8	2 9/16	3 7/16	2 1/2	1 3/4	7/8	1/4
1 1/2	730	55	1/8 x 1	1/8 x 1	3/8	3	4	2 1/2	2 1/8	1 1/16	1/4
2	730	61	1/8 x 1	1/8 x 1	3/8	3 11/16	4 7/8	2 1/2	2 15/16	1 5/8	1/4
2 1/2	1,350	140	3/16 x 1 1/4	3/16 x 1 1/4	1/2	4 11/16	6 1/8	3	3 13/16	2	3/8
3	1,350	152	3/16 x 1 1/4	3/16 x 1 1/4	1/2	4 3/4	6 9/16	3	3 7/8	1 3/4	3/8
3 1/2	1,350	170	3/16 x 1 1/4	3/16 x 1 1/4	1/2	4 15/16	6 15/16	3	4 1/16	1 3/4	3/8
4	1,430	213	1/4 x 1 1/4	3/16 x 1 1/4	5/8	5 9/16	7 13/16	3 1/2	4 1/2	1 15/16	3/8
5	1,430	244	1/4 x 1 1/4	3/16 x 1 1/4	5/8	6 3/16	9	3 1/2	5 1/8	1 3/4	1/2
6	1,940	357	1/4 x 1 1/2	3/16 x 1 1/2	3/4	6 15/16	10 1/8	4	5 5/8	1 7/8	1/2
8	2,000	497	1/4 x 1 3/4	3/16 x 1 3/4	7/8	8 3/8	12 5/8	4 1/4	7	2 1/8	5/8
10	3,600	880	3/8 x 1 3/4	1/4 x 1 3/4	7/8	9 7/8	15 1/4	4 1/2	8 3/8	2 1/4	3/4
12	3,800	1,142	3/8 x 2	1/4 x 2	7/8	11 1/2	18	4 1/2	10 3/16	3	3/4
14	4,200	1,484	1/2 x 2	1/4 x 2	1	12 7/16	19 7/16	5 1/4	10 13/16	2 15/16	7/8
16	4,600	2,104	1/2 x 2 1/2	1/4 x 2 1/2	1	14 1/16	22 1/16	6	12 7/16	2 5/8	1
18	4,800	2,442	1/2 x 2 1/2	1/4 x 2 1/2	1	15 1/2	24 3/4	6 1/2	13 15/16	3 7/8	1 1/8
20	4,800	4,265	3/4 x 3	3/8 x 3	1 1/4	17 1/4	27 3/8	7	14 7/16	4	1 1/4
24	4,800	4,853	3/4 x 3	3/8 x 3	1 1/4	19 5/8	31 5/8	7 1/2	17 1/2	4 1/4	1 1/4
30	6,000	6,964	1 x 3	3/8 x 3	1 1/4	24 1/8	39 1/8	8 1/4	21 7/8	5	1 1/4
36	-	7,716	1 x 3	3/8 x 3	1 1/4	27 1/8	46 3/16	8 1/4	25 1/2	5 1/2	1 1/4

SCOMPONENTS02.XLS-09/17/09

SUPPORT ASSEMBLY COMPONENTS