

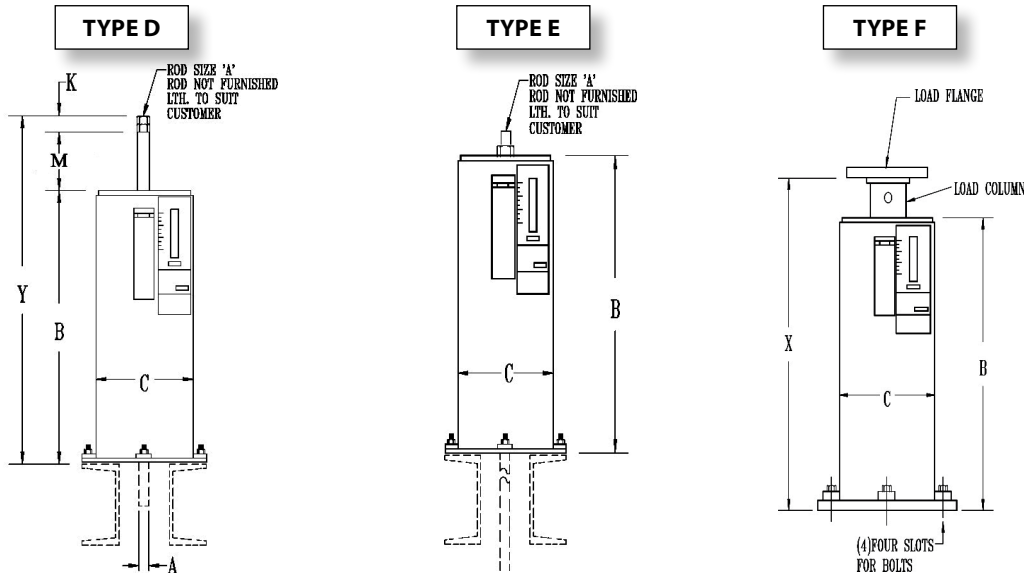


## FIG. PTP-8

## QUADRUPLE VARIABLE SPRINGS

ENGINEERED SPRING SUPPORTS

[www.pipingtech.com/ptp8-def](http://www.pipingtech.com/ptp8-def)



**ORDERING:** Specify figure number, size, type, description, type, operating load and calculated amount and direction of pipe movement from installed to operating position. Please specify any non-standard requirements, i.e. internally guided load column, jacking bolt, lifting lugs, etc.

HANGER SIZE	TYPES D & E					TYPE F									
	CASING LENGTH	ROD LENGTH	NUT ALLOW.	SPACER HEIGHT	APPROX. WEIGHT OF EACH	CASING LENGTH	BOTTOM FLANGE	BOTTOM FLANGE BOLT CIRCLE		BOTTOM FLANGE BOLTS	LOAD COLUMN DIA.	LOAD FLANGE	LOADED LENGTH X		APPROX. WEIGHT
	B	Y	K	M	lb.	B	THK. X SQ.	MIN.	MAX.			THK. X SQ.	MIN.	MAX.	lb.
00	25 1/4	37 3/8	1 1/4	11 1/2	22	25 1/4	1/4 x 7 1/2	7	8 3/4	5/8	1.900	3/16 x 3 13/16	26 7/8	28 7/8	38
10	28 3/4	40 7/8	1 1/4	11 1/2	26	28 3/4	1/4 x 7 1/2	7	8 3/4	5/8	1.900	3/16 x 3 13/16	30 3/8	32 3/8	40
20	31 3/4	43 7/8	1 1/4	11 1/2	30	31 3/4	1/4 x 7 1/2	7	8 3/4	5/8	1.900	3/16 x 3 13/16	33 3/8	35 3/8	44
30	27 3/4	40 1/8	1 1/4	11 1/2	38	27 3/4	1/4 x 7 1/2	7 3/4	8 3/4	3/4	2.875	3/16 x 5 1/4	29 3/8	31 3/8	66
40	30 1/4	42 5/8	1 1/4	11 1/2	44	30 1/4	1/4 x 7 1/2	7 3/4	8 3/4	3/4	2.875	3/16 x 5 1/4	31 7/8	33 7/8	74
50	33	45 3/8	1 1/4	11 1/2	48	33	1/4 x 7 1/2	7 3/4	8 3/4	3/4	2.875	3/16 x 5 1/4	34 5/8	36 5/8	78
60	32 3/4	45 5/8	1 1/2	11 1/2	74	32 3/4	3/8 x 9	8 1/8	10 7/8	3/4	3.500	1/4 x 6 5/16	34 3/8	36 3/8	118
70	36 3/8	49 7/16	1 1/2	11 1/2	90	36 3/8	3/8 x 9	8 1/8	10 7/8	3/4	3.500	1/4 x 6 5/16	38	40	138
80	38 3/8	51 5/16	1 1/2	11 1/2	98	38 3/8	3/8 x 9	8 1/8	10 7/8	3/4	3.500	1/4 x 6 5/16	40	42	144
90	38 1/8	52 1/16	1 3/4	11 1/2	168	38 1/8	1/2 x 13 1/4	12 1/4	16 1/2	3/4	4.500	1/2 x 8 1/4	39 3/4	41 3/4	252
100	42 7/8	56 7/8	1 3/4	11 1/2	196	42 7/8	1/2 x 13 1/4	12 1/4	16 1/2	3/4	4.500	1/2 x 8 1/4	44 1/2	46 1/2	282
110	34 1/8	48 3/8	2	11 1/2	170	34 1/8	1/2 x 13 1/4	12 1/4	16 1/2	3/4	4.500	1/2 x 8 1/4	35 3/4	37 3/4	248
120	36 3/4	51 1/8	2 1/4	11 1/2	188	36 3/4	1/2 x 13 1/4	12 1/4	16 1/2	3/4	4.500	1/2 x 8 1/4	38 3/8	40 3/8	268
130	46 3/4	61 5/8	2 1/2	11 1/2	258	46 3/4	1/2 x 13 1/4	12 1/4	16 1/2	3/4	4.500	1/2 x 8 1/4	48 3/8	50 3/8	342
140	47 3/4	62 1/8	2 1/2	11 1/2	274	47 3/4	1/2 x 13 1/4	12 1/4	16 1/2	3/4	4.500	1/2 x 8 1/4	49 3/8	51 3/8	356
150	47 3/4	62 3/4	3	11 1/2	398	47 3/4	1/2 x 13 1/4	12 1/4	16 1/2	3/4	4.500	1/2 x 8 1/4	49 3/8	51 3/8	374
160	56 7/8	72 1/2	3 1/2	11 1/2	376	56 7/8	1/2 x 13 1/4	12 1/4	16 1/2	3/4	4.500	1/2 x 8 1/4	58 1/2	60 1/2	454
170	65 1/4	81 1/4	4	11 1/2	466	65 1/4	1/2 x 13 1/4	12 1/4	16 1/2	3/4	4.500	1/2 x 8 1/4	66 7/8	68 7/8	546
180	64 3/8	79 3/16	4 9/16	11 1/2	894	61 7/8	5/8 x 17 1/4	17 3/4	22	3/4	5.563	1/2 x 12 1/2	63 1/2	65 1/2	1,040
190	73 3/8	88 5/8	5	11 1/2	1,036	70 7/8	5/8 x 17 1/4	17 3/4	22	3/4	5.563	1/2 x 12 1/2	72 1/2	74 1/2	1,188
200	86 7/8	102 3/16	5 9/16	11 1/2	1,386	84 1/4	3/4 x 17 1/4	17 3/4	22	3/4	5.563	1/2 x 12 1/2	87 1/4	89 1/4	1,554
210	96 1/8	111 3/4	6 1/4	11 1/2	1,630	93 1/2	3/4 x 17 1/4	17 3/4	22	3/4	5.563	1/2 x 12 1/2	96 1/2	98 1/2	1,684
220	120 3/8	136 3/8	6 5/8	11 1/2	2,220	117 3/4	3/4 x 17 1/4	17 3/4	22	3/4	5.563	1/2 x 12 1/2	120 3/4	122 3/4	2,308